

# CO 2.50 E 3

Two Post Lift

## Parts Breakdown

ET362705-en



## © MAHA GMBH & Co. KG.

Legal notice based on ISO 16016:

The reproduction, distribution and utilization of this document as well as the communication of its contents to others without explicit authorization is prohibited. Offenders will be held liable for the payment of damages. All rights reserved in the event of the grant of a patent, utility model or design.

The contents of this edition have been checked with great care. However, errors cannot be fully excluded. Subject to technical change without notice.

## DOCUMENT

Document №: ET362705-en  
Approval Date: 20.08.2009

## MANUFACTURER

MAHA Maschinenbau Haldenwang GmbH & Co. KG.  
– Geschäftsbereich SLIFT –  
Hoyen 20  
87490 Haldenwang  
Germany

Phone: +49 (0) 8374 585 0  
Fax: +49 (0) 8374 585 499  
Fax Parts: +49 (0) 8374 585 565  
Internet: <http://www.slift.de>  
E-Mail: [vertrieb@slift.de](mailto:vertrieb@slift.de)

## SERVICE

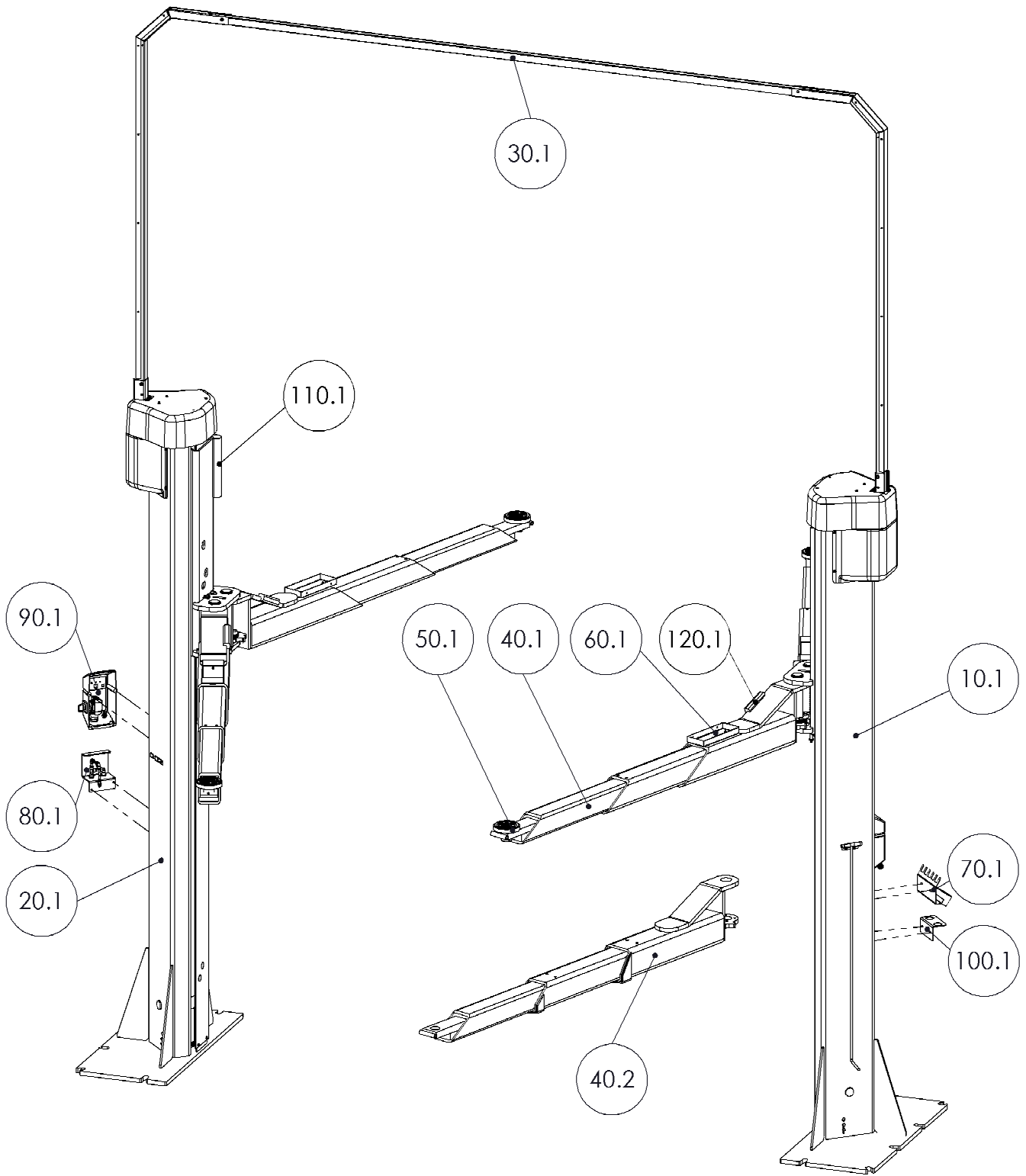
AutomoTec GmbH  
Maybachstraße 8  
87437 Kempten  
Germany

Phone: +49 (0) 180 56242 50  
Fax: +49 (0) 180 56242 55  
Internet: <http://www.automo-tec.com>  
E-Mail: [service@automo-tec.com](mailto:service@automo-tec.com)

## CONTENTS

<b>1</b>	<b>CO 2.50 E 3</b> .....	<b>4</b>
	1.1 Operating Column .....	6
	1.2 Column .....	10
	1.3 Screw Cover .....	13
	1.4 Screw Drive .....	14
	1.5 Supports .....	15
	1.5.1 Support Disk .....	16
	1.5.1.1 Support Disk .....	17
	1.5.2 Mb 100 Support .....	18
	1.5.3 Support .....	19
<b>2</b>	<b>Electrical Equipment</b> .....	<b>20</b>

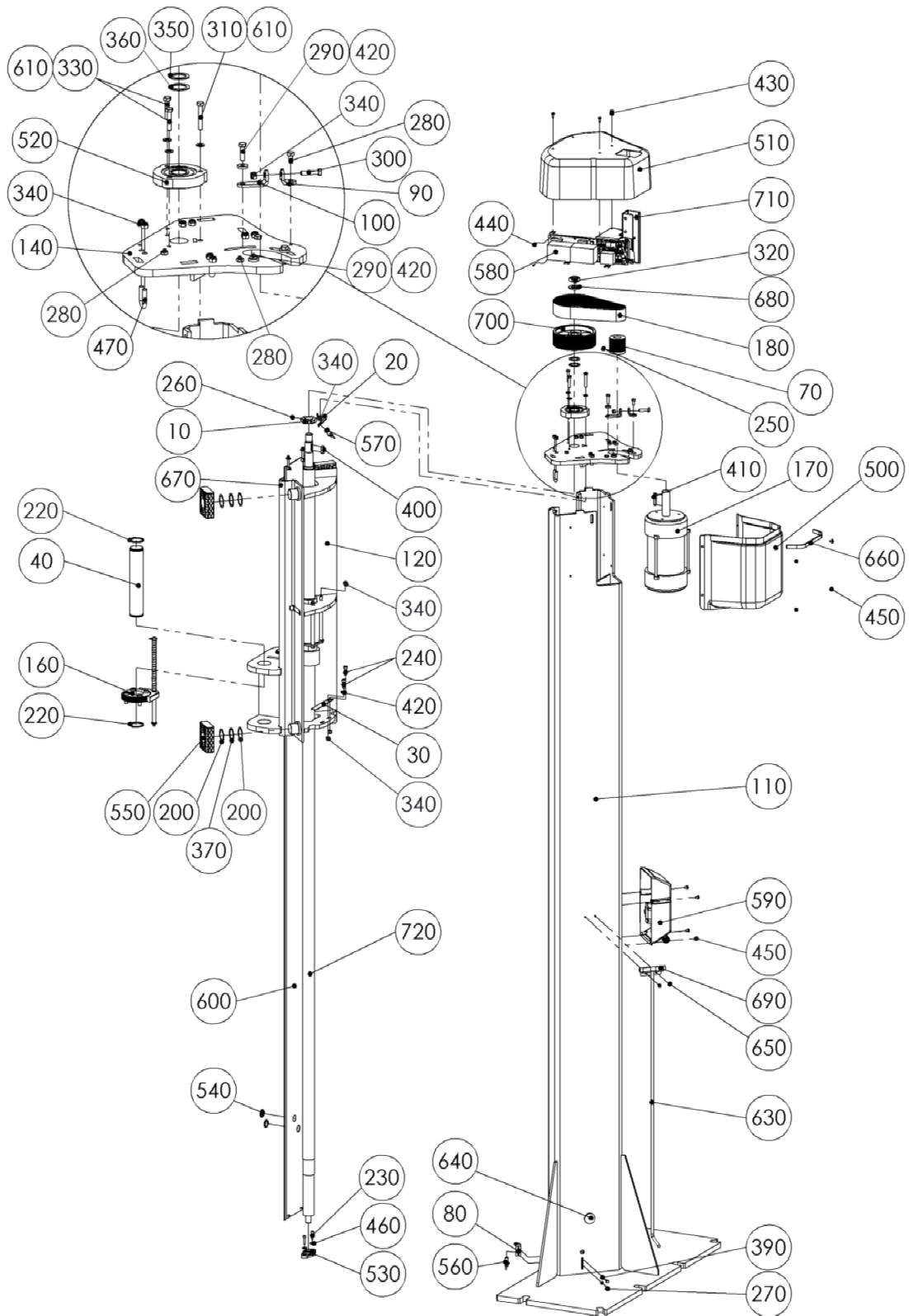
1 CO 2.50 E 3



---

<b>Item nr.</b>	<b>Spare part</b>	<b>Tooltip</b>	<b>Article number</b>
10.1	Operating Column		030470 00014 0
20.1	Column		030470 00015 0
30.1	Cable Guide		23000082
40.1	Telescopic Arm		030470 00005 0
40.2	Telescopic Arm		030470 00040 0
50.1	Supports	Section 1.5	
60.1	Wheel Nut Tray		030470 00100800
70.1	Impact Wrench Holder		03 36 40220
80.1	Compressed-Air Supply		03 36 18300
90.1	Control		53 2645
100.1	Support Plate		030470 00065 0
110.1	Edge Protection		17 3009
120.1	Edge Protection		17 3011

1.1 Operating Column



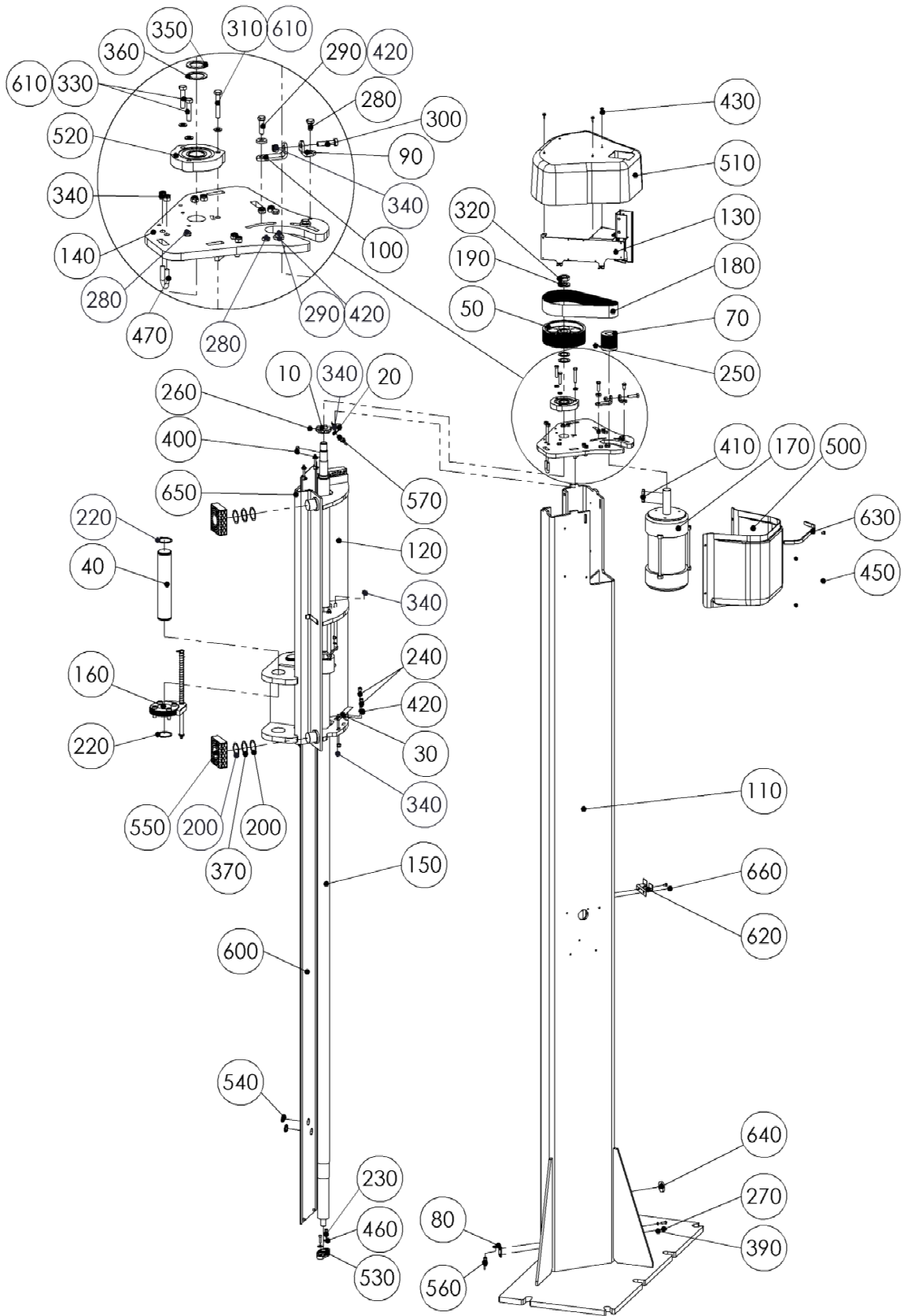
Item nr.	Spare part	Tooltip	Article number
10	Pulse Generator		02 47 5270
20	Angle		02 47 5290
30	Leaf Spring		020470 00007000
40	Support Arm Pin		020470 00023 0
70	Pulley		020470 00036 0
80	Angle		020470 00037 0
90	Belt Tensioner		020470 00080 0
100	Belt Tensioner		020470 00081 0
110	Operating Column		030470 00001 0
120	Carriage		030470 00003 0
140	Motor Plate		030470 00016 0
160	Locking Device		030470 00022 0
170	Motor		20 7066 11
180	Ribbed V-Belt		20 9654
200	Spring Washer		22 0137 5040 5
220	Snap Ring		22 0471 050 1
230	Allen Screw		22 0912 06025 1
240	Allen Screw		22 0912 08025 1
250	Threaded Pin		22 0913 06012
260	Threaded Pin		22 0914 06008
270	Hex Head Cap Screw		22 0933 06016 1
280	Hex Head Cap Screw		22 0933 08016 1
290	Hex Head Cap Screw		22 0933 08030 1
300	Hex Head Cap Screw		22 0933 08035 1
310	Hex Head Cap Screw		22 0933 08050 1
320	Hex Nut		22 0934 2420 1
330	Hex Head Cap Screw		22 0933 08040 1
340	Hex Nut		22 0985 08 1
350	Adjusting Washer		22 0988 284020
360	Adjusting Washer		22 0988 304215
370	Adjusting Washer		22 0988 405015
390	Serrated Lock Washer		22 6798 064 1
400	Feather Key		22 6885 080730
410	Feather Key		22 6885 080750
420	Washer		22 7349 08 1
430	Self-Drilling Screw		22 7504 04213 1N
440	Pan Head Screw		22 7985 03010 1
450	Pan Head Screw		22 7985 06008 1

Item nr.	Spare part	Tooltip	Article number
460	Washer		22 9021 064 1
470	Mounting Bar		23 0170
500	Cover Hood		23000074
510	Cover Hood		23000075
520	Flange Bearing		24 8015 100
530	Flange Bearing		24 8016 000
540	Plug		31 5019 232
550	Slider Block		31 6068
560	Sensor		51 3072
570	Sensor		51 3073
580	Printed Circuit Board		52 2305
590	Control		53 2645
600	Screw Cover	Section 1.3	030470 00056 0
610	Washer		22 0125 08 1
630	Adjusting Aid		03 36 26510
640	Rubber Disk		17 1170
650	Pan Head Screw		22 7985 06010 1
660	Sponge Rubber Band		020470 00093 0
670	Rubber Pad		17 2057
680	Washer		22 0125 24 1
690	Support		02 36 18710
700	Pulley		020470 00024 0
710	Angle		030470 00008 0
720	Screw Drive	Section 1.4	030470 00018 0





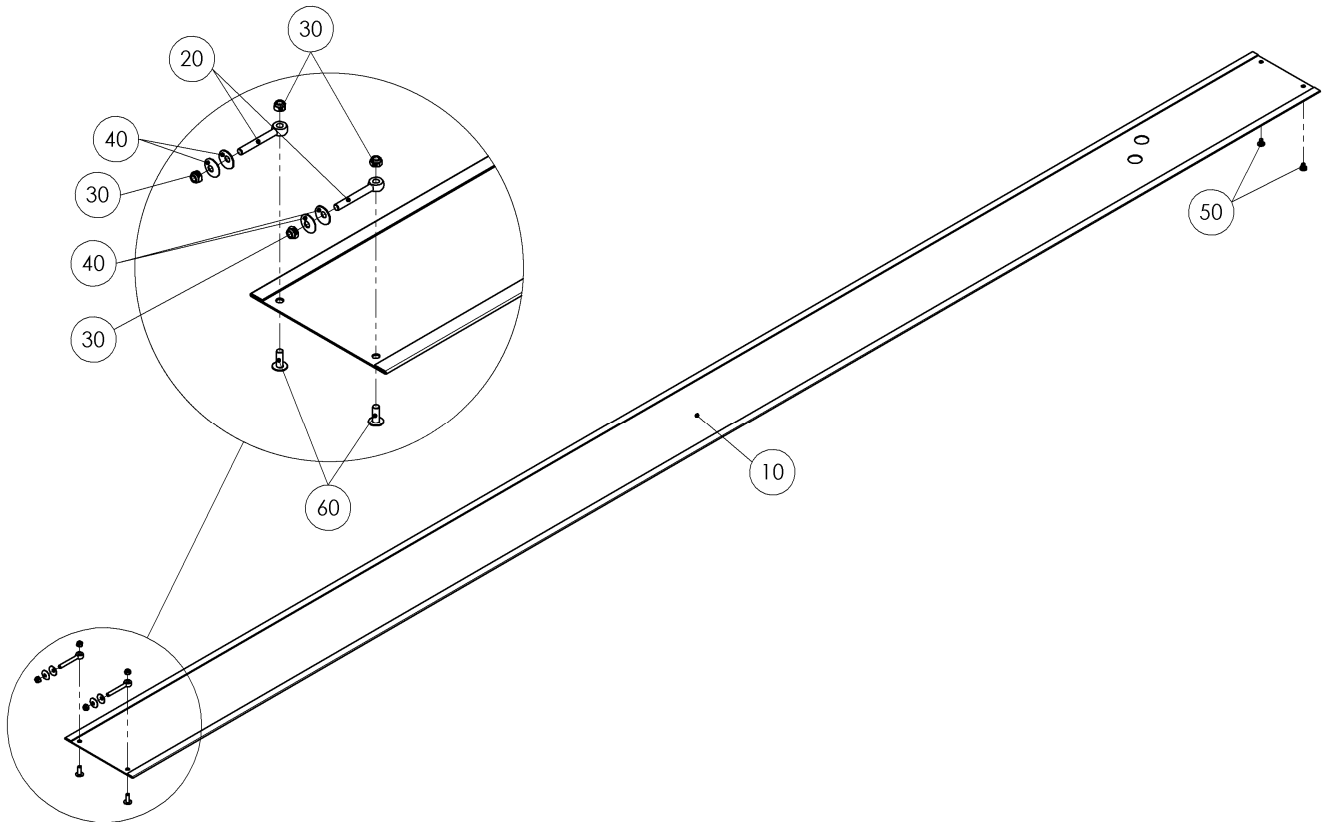
1.2 Column



Item nr.	Spare part	Tooltip	Article number
10	Pulse Generator		02 47 5270
20	Angle		02 47 5290
30	Leaf Spring		020470 00007000
40	Support Arm Pin		020470 00023 0
50	Pulley		020470 00024 0
70	Pulley		020470 00036 0
80	Angle		020470 00037 0
90	Belt Tensioner		020470 00080 0
100	Belt Tensioner		020470 00081 0
110	Column		030470 00002 0
120	Carriage		030470 00003 0
130	Angle		030470 00011 0
140	Motor Plate		030470 00016 0
150	Screw Drive	Section 1.4	030470 00018 0
160	Locking Device		030470 00022 0
170	Motor		20 7066 11
180	Ribbed V-Belt		20 9654
190	Washer		22 0125 24 1
200	Spring Washer		22 0137 5040 5
220	Snap Ring		22 0471 050 1
230	Allen Screw		22 0912 06025 1
240	Allen Screw		22 0912 08025 1
250	Threaded Pin		22 0913 06012
260	Threaded Pin		22 0914 06008
270	Hex Head Cap Screw		22 0933 06016 1
280	Hex Head Cap Screw		22 0933 08016 1
290	Hex Head Cap Screw		22 0933 08030 1
300	Hex Head Cap Screw		22 0933 08035 1
310	Hex Head Cap Screw		22 0933 08050 1
320	Hex Nut		22 0934 2420 1
330	Hex Head Cap Screw		22 0933 08040 1
340	Hex Nut		22 0985 08 1
350	Adjusting Washer		22 0988 284020
360	Adjusting Washer		22 0988 304215
370	Adjusting Washer		22 0988 405015
390	Serrated Lock Washer		22 6798 064 1
400	Feather Key		22 6885 080730
410	Feather Key		22 6885 080750

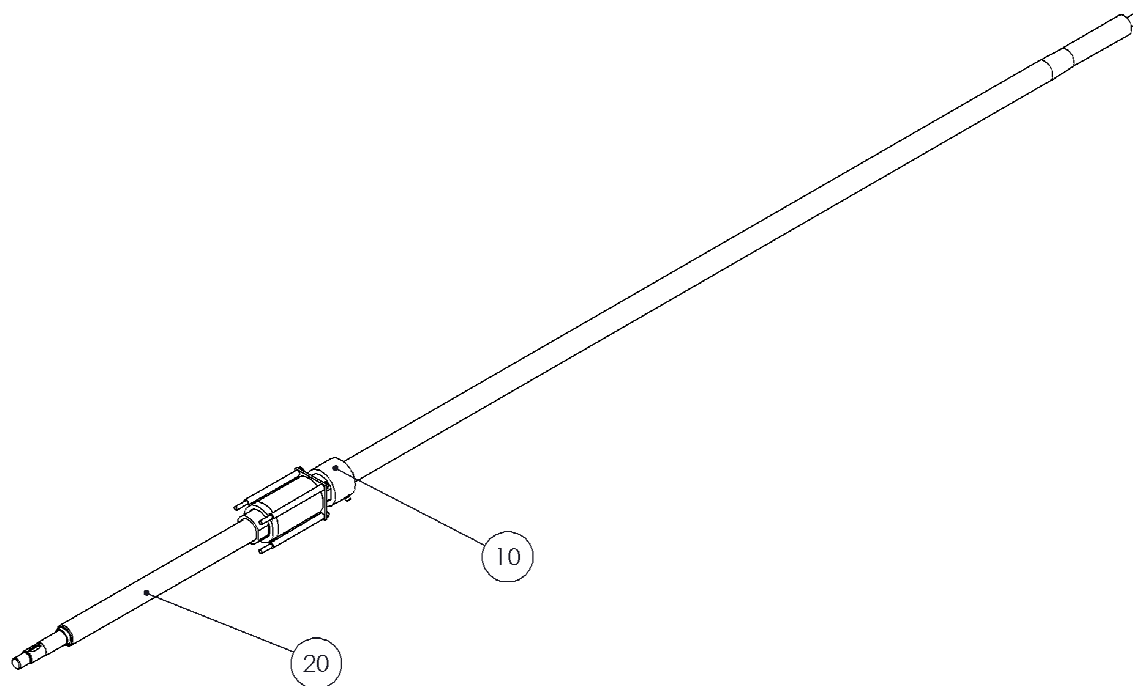
<b>Item nr.</b>	<b>Spare part</b>	<b>Tooltip</b>	<b>Article number</b>
420	Washer		22 7349 08 1
430	Self-Drilling Screw		22 7504 04213 1N
450	Pan Head Screw		22 7985 06008 1
460	Washer		22 9021 064 1
470	Mounting Bar		23 0170
500	Cover Hood		23000074
510	Cover Hood		23000075
520	Flange Bearing		24 8015 100
530	Flange Bearing		24 8016 000
540	Plug		31 5019 232
550	Slider Block		31 6068
560	Sensor		51 3072
570	Sensor		51 3073
600	Screw Cover	Section 1.3	030470 00056 0
610	Washer		22 0125 08 1
620	Support		02 36 18710
630	Sponge Rubber Band		020470 00093 0
640	Rubber Disk		17 1170
650	Rubber Pad		17 2057
660	Pan Head Screw		22 7985 06010 1

## 1.3 Screw Cover



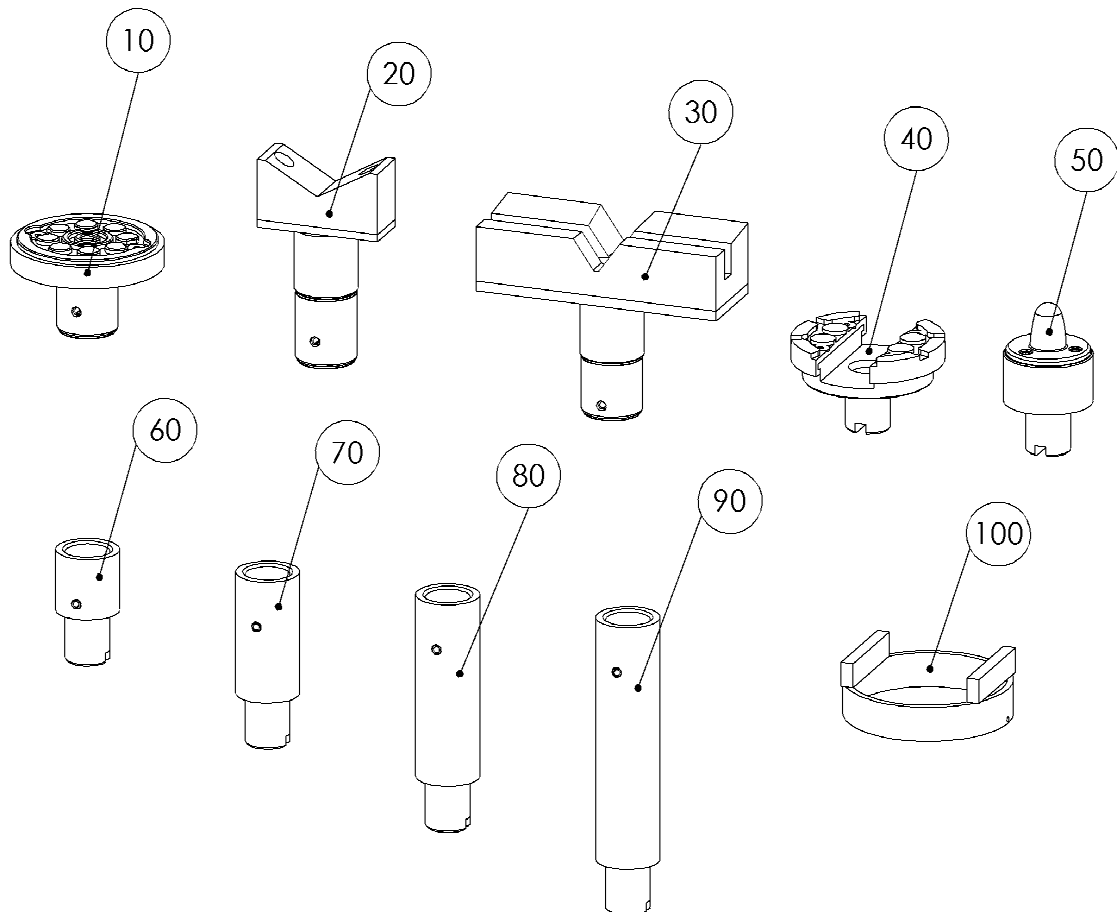
Item nr.	Spare part	Article number
10	Cover	020470 00101 0
20	Eye Bolt	22 0444 06050
30	Hex Nut	22 0985 06 1
40	Disk Spring	22 2093 1806208
50	Binding Head Screw	23 3076
60	Binding Head Screw	23 3080

## 1.4 Screw Drive



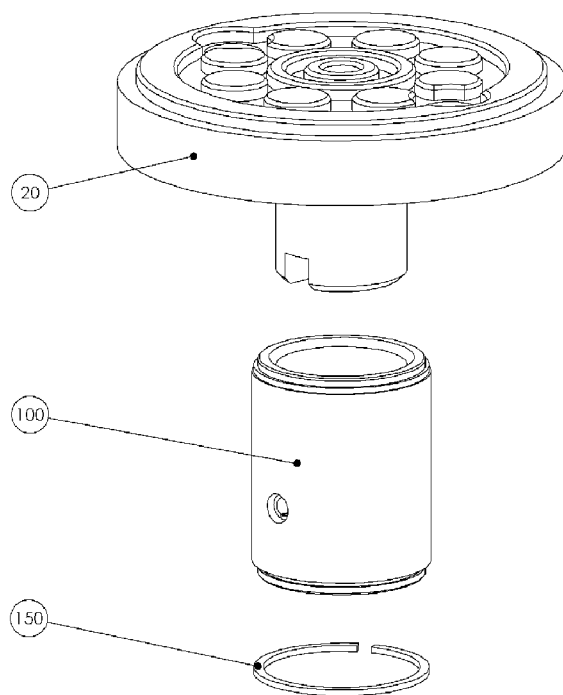
Item nr.	Spare part	Article number
10	Load And Safety Nut Assy	030470 00246 0
20	Support Screw	23 4775 000

## 1.5 Supports



Item nr.	Spare part	Article number
10	Support Disk	03 36 31260
20	Mb 100 Support	03 36 31180
50	Support	030360 00025 0
60	Adapter 50	03 36 31015
70	Adapter 100	03 36 31020
80	Adapter 150	03 36 31024
90	Adapter 200	03 36 31027
100	Adapter	03 28 18230

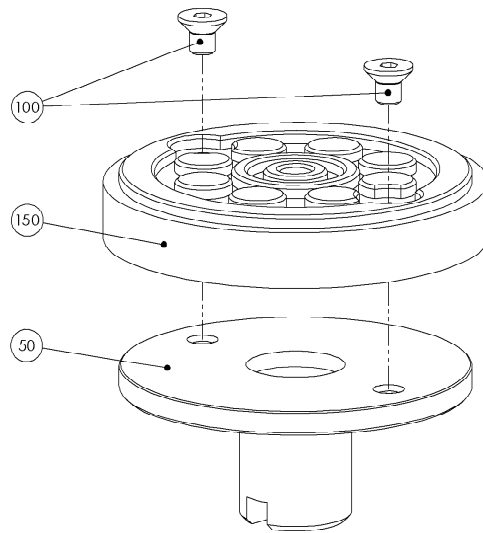
## 1.5.1 Support Disk (03 36 31260)



Item nr.	Spare part	Article number
20	Support Disk	03 36 31050
100	Adapter Thread	03 36 31065
150	Snap Ring	22 7993 045

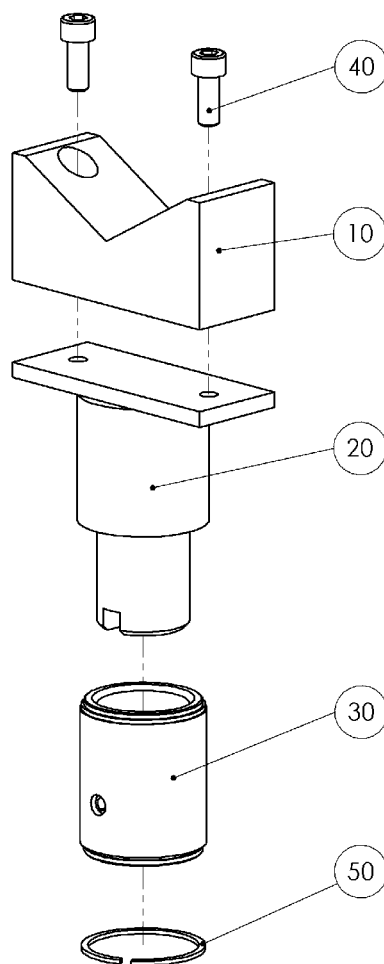


### 1.5.1.1 Support Disk (03 36 31050)



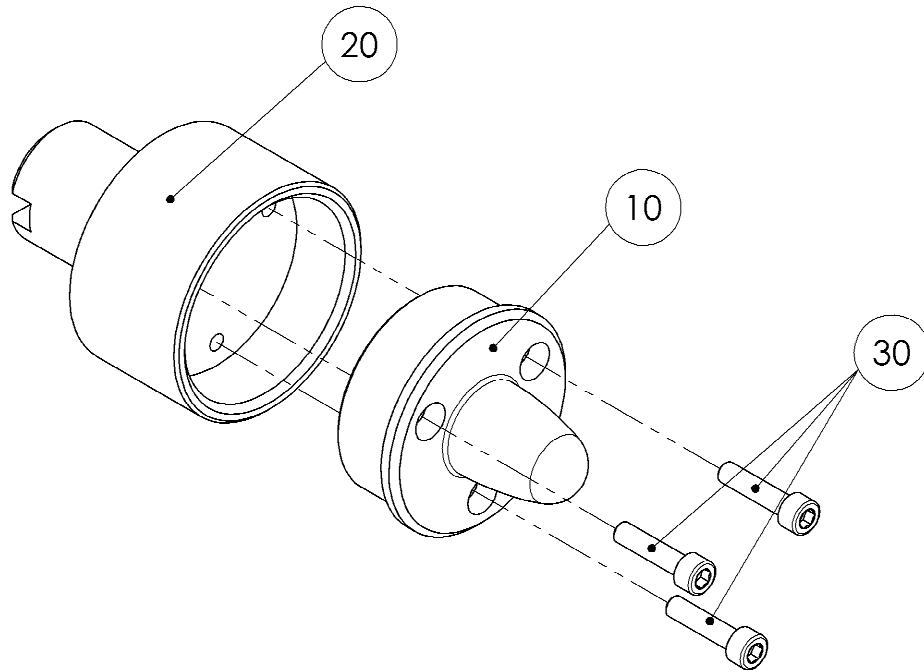
Item nr.	Spare part	Article number
50	Disk	030470 00060 0
100	Countersunk Screw	22 7991 08012 1
150	Support Rubber	17 2023 01

## 1.5.2 Mb 100 Support (03 36 31180)









Item nr.	Spare part	Article number
10	Prism	02 36 18500
20	Prism Support	03 36 31170
30	Adapter Thread	03 36 31065
40	Allen Screw	22 0912 08020 10
50	Snap Ring	22 7993 045



### 1.5.3 Support (030360 00025 0)










Item nr.	Spare part	Article number
10	Support	020360 00042 0
20	Adapter	020360 00043 0
30	Allen Screw	22 0912 06025 1

## 2 Electrical Equipment

Item No.	Thumbnail	Spare Part	Description	Article Number
10		Label	Inspection Label	54 1403
20		Label	"S.W.L."	54 1447
30		Control Unit	ECON III	53 2644
40		Control Unit	CO.2.30E3	53 2645
50		Cable	f. Power Supply Box	61 MAEC KAEB
60		Patch Cable	3,0m	51 4097

Item No.	Thumbnail	Spare Part	Description	Article Number
70		Patch Cable	10,0m	51 4099
80		Connecting Cable	10,0m 4-pole	51 4124
90		Connecting Cable	10,0m	51 4125
100		Cable Harness		61 EC5T KA09
110		Ribbed V-Belt	20 Ribbed, PJ723	20 9654
120		Main Switch		50 1095
130		Terminal Strip	2-pole	53 3372

Item No.	Thumbnail	Spare Part	Description	Article Number
140		Blind Lock		53 2019
150		Motor	4,0kW 230/400V	20 7066 11
160		Printed Circuit Board	Control	52 2305
170		Fuse Holder		53 0370
180		Fuse	T 10 A	53 3066
190		Protective Conductor	4,0mm 10000mm lg. Ge/gn	51 4308
200		Proximity Switch	M12/2mm 3,5m	51 3072

Item No.	Thumbnail	Spare Part	Description	Article Number
210		Proximity Switch	M12/2mm 0,5m	51 3073
220		Light Barrier	24-240V	51 3093
230		Connecting Cable	Main Switch	51 4123
240		Machinery Socket	Walter 10003	53 0106
250		Socket Combination		53 2270
260		Power Section Point		61 MAEC VSVE
270		Lashing Strap	4,0m	19 1050







## Bestellung / Order

parts@maha.de



<b>Auftraggeber</b> Customer	
Händler <small>Dealer</small>	Bestellnummer <small>Order no.</small>
Straße <small>Street</small>	Kunden Nr. <small>Customer no.</small>
PLZ, Ort <small>City</small>	Händler-Bestell-Nr. <small>Dealer order no.</small>
Land <small>Country</small>	Liefertermin <small>Delivery Date</small>
Telefon <small>Phone</small>	Seriennr. / Baujahr <small>Serial no. / year of production</small>

<b>Lieferanschrift</b> Delivery	<b>Lieferbedingungen</b> Terms of delivery	
Firma <small>Company</small>	<input type="checkbox"/> Luftfracht <small>Airfreight</small>	<input type="checkbox"/> Seefracht <small>Seafreight</small>
Straße <small>Street</small>	<input type="checkbox"/> Spedition (Lieferung "unfrei") <small>Forwarder (delivery "freight forward")</small>	
PLZ, Ort <small>City</small>	<input type="checkbox"/> Abholung durch Händler-Spedition <small>Pick-up by dealer's forwarder</small>	
Land <small>Country</small>	<input type="checkbox"/> Abholung durch Händler <small>Pick-up directly by dealer</small>	
Telefon <small>Phone</small>	<input type="checkbox"/> Lieferung durch MAHA <small>Delivery by MAHA</small>	
Montage durch <small>Installation by</small>	<input type="checkbox"/> Kurier (TNT, Fedex, ...) <small>Courier</small>	

Pos. <small>Item</small>	Artikel Nr. <small>Article no.</small>	Beschreibung <small>Description</small>	Typ <small>Model</small>	Stück <small>Quantity</small>
1				
2				
3				
4				
5				
6				
7				
8				
9				
10				
11				
12				

Farbe <small>Colour</small>		Datum <small>Date</small>		Unterschrift <small>Signature</small>	
--------------------------------	--	------------------------------	--	--	--





# Bestellung / Order

parts@maha.de



<b>Auftraggeber</b> Customer	
Händler <small>Dealer</small>	Bestellnummer <small>Order no.</small>
Straße <small>Street</small>	Kunden Nr. <small>Customer no.</small>
PLZ, Ort <small>City</small>	Händler-Bestell-Nr. <small>Dealer order no.</small>
Land <small>Country</small>	Liefertermin <small>Delivery Date</small>
Telefon <small>Phone</small>	Seriennr. / Baujahr <small>Serial no. / year of production</small>

<b>Lieferanschrift</b> Delivery	<b>Lieferbedingungen</b> Terms of delivery	
Firma <small>Company</small>	<input type="checkbox"/> Luftfracht <small>Airfreight</small>	<input type="checkbox"/> Seefracht <small>Seafreight</small>
Straße <small>Street</small>	<input type="checkbox"/> Spedition (Lieferung "unfrei") <small>Forwarder (delivery "freight forward")</small>	
PLZ, Ort <small>City</small>	<input type="checkbox"/> Abholung durch Händler-Spedition <small>Pick-up by dealer's forwarder</small>	
Land <small>Country</small>	<input type="checkbox"/> Abholung durch Händler <small>Pick-up directly by dealer</small>	
Telefon <small>Phone</small>	<input type="checkbox"/> Lieferung durch MAHA <small>Delivery by MAHA</small>	
Montage durch <small>Installation by</small>	<input type="checkbox"/> Kurier (TNT, Fedex, ...) <small>Courier</small>	

Pos. <small>Item</small>	Artikel Nr. <small>Article no.</small>	Beschreibung <small>Description</small>	Typ <small>Model</small>	Stück <small>Quantity</small>
1				
2				
3				
4				
5				
6				
7				
8				
9				
10				
11				
12				

Farbe <small>Colour</small>		Datum <small>Date</small>		Unterschrift <small>Signature</small>	
--------------------------------	--	------------------------------	--	--	--